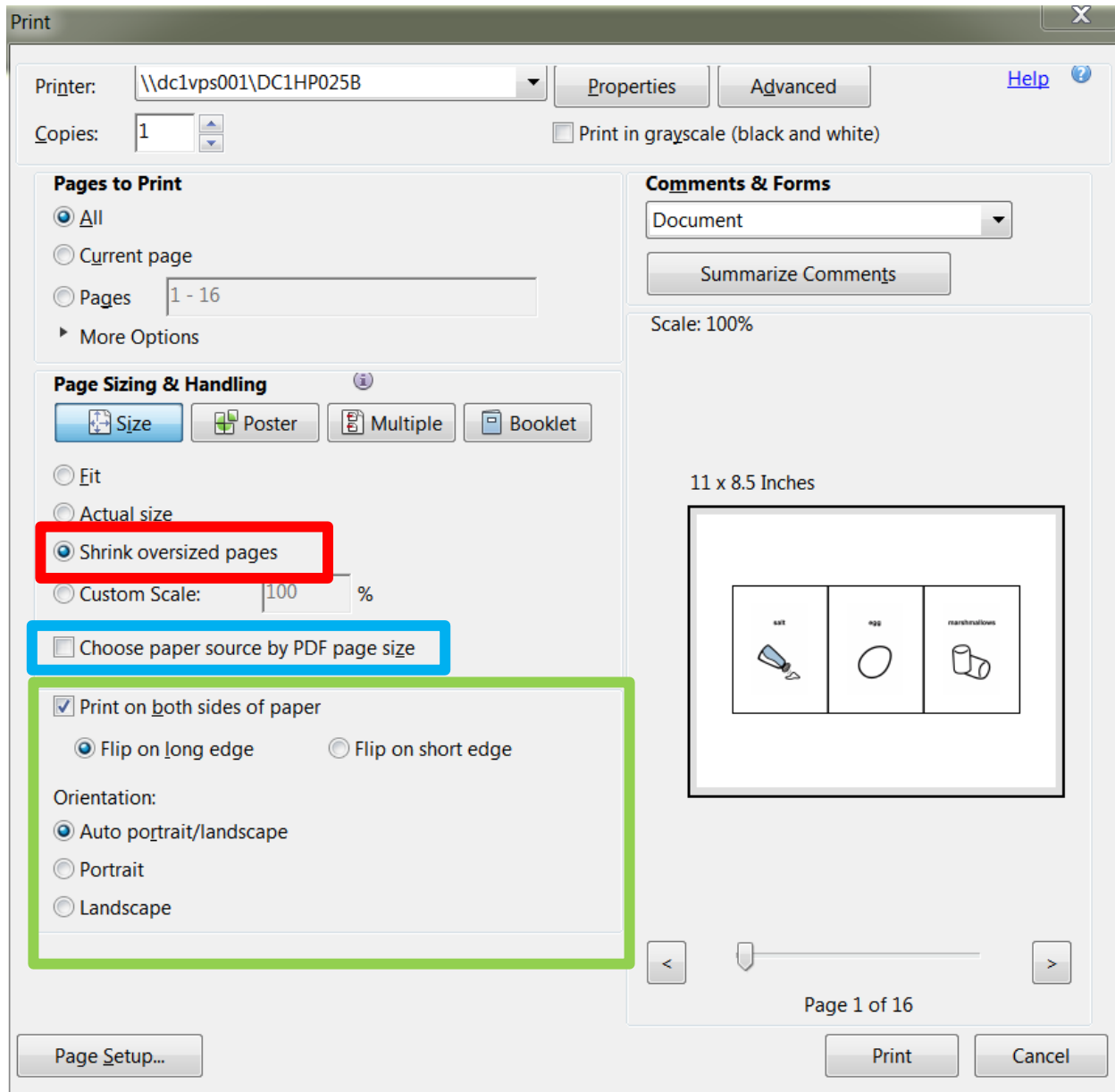
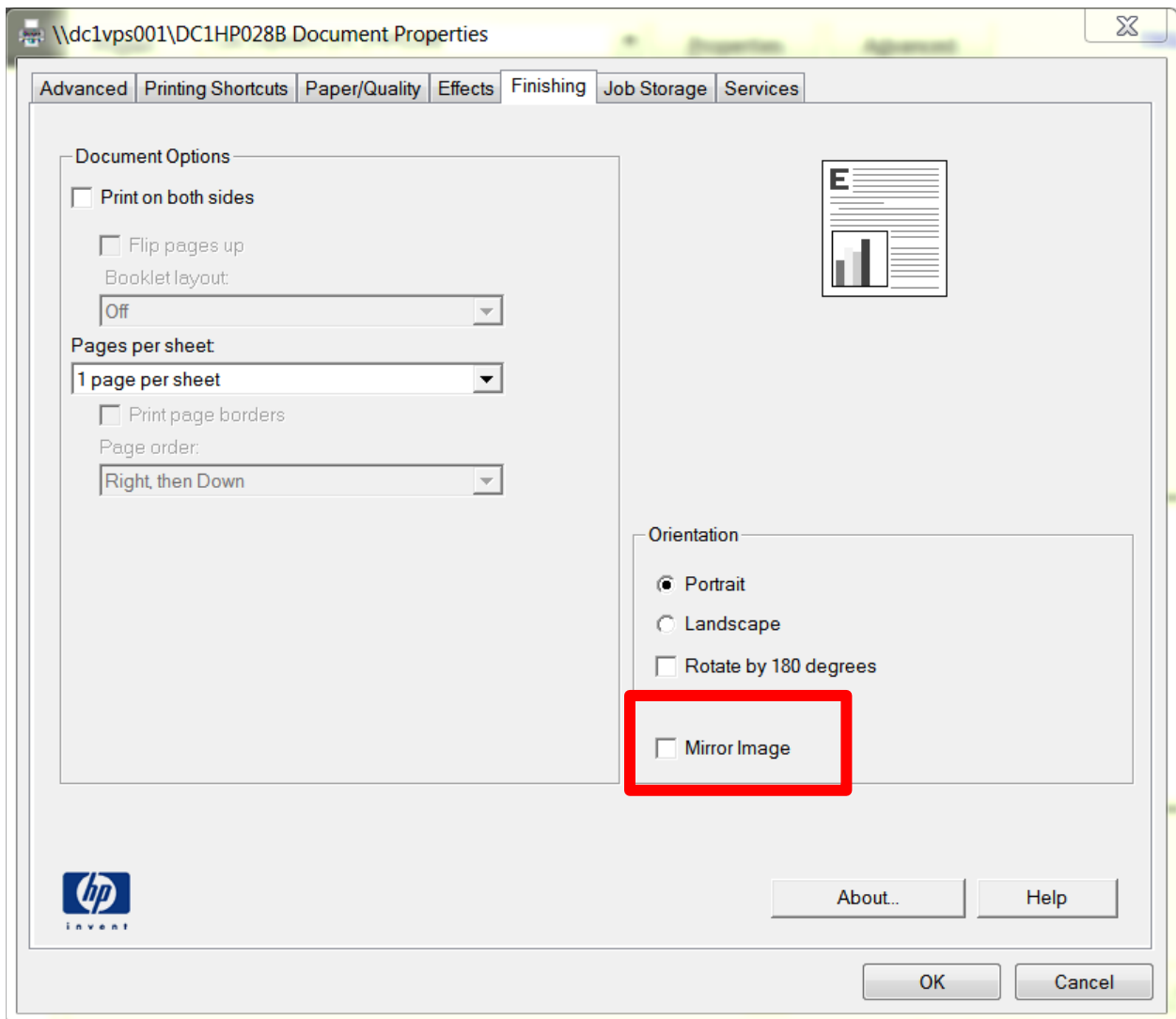
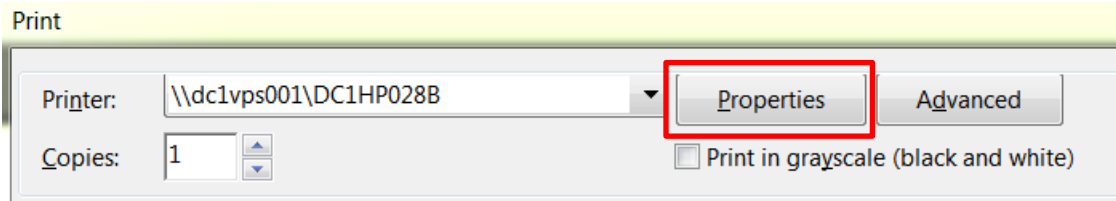


Directions for Printing NMAPA Sample Cards

When printing the NMAPA sample cards, select '**Shrink Oversized Pages**' in the Page Scaling drop-down box. Next, select '**Auto-Portrait/Landscape**' (may say 'Auto-rotate and Center') and '**Print on both sides of paper**' with '**Flip on long edge**' selected. Then de-select the '**Choose paper source by PDF page size**' box if it was already checked. These steps should produce the print preview screen displayed below.



In addition, open your printer properties and deselect 'Mirror Image' if you find that it has been auto-selected for you. These simple steps should enable you to print the cards with ease.



Directions for Printing NMAPA Sample Strips

To print sample strips such as the *Making a Graph* strips, set your printer properties to '2-Sided Print, Flip on Short Edge'. For some printers, this setting may be called 'Flip pages up'. In addition, be sure your computer has selected 8.5 x 11 paper. These simple steps should enable you to print all NMAPA sample strips correctly.

